

 **Indiana**
www.indianagroup.com



Contents

Milestone.....	05
About us.....	06
Corporate philosophy.....	08
Fabrication facilities.....	10
QHSE certificates.....	11
QHSE Policy.....	12

◀ Products

Fabricated Steel Structures.....	13-18
Steel bridge.....	19-20
Gratings.....	21-22
Handrail.....	23-24
Cable management system.....	26-26
Bulk material handling system.....	27-28
GRP / FRP products.....	29-30
Hot Dip Galvanizing.....	31-32
Shot blasting and Painting.....	33-34
Clients.....	36

Milestones

2017

Indiana commissions fully automatic line for embossed type cable tray.



2013

Indiana commissions its hot dip galvanizing plant.

2009

Indiana Gratings commences fabricator Structural Steel.

2006

Indiana commences fabrication of Handrails.

1997

Indiana Gratings Private Limited was established. Indiana commences fabrication of electroforged gratings.



1988

Indiana Conveyors Private Limited was established.

1984

Indiana commences fabrication of cable trays. Indiana Cable Trays Corporation was established.

1978

Indiana commences fabrication of bulk material handling systems.



1970

Indiana Group was founded with the incorporation of Indiana Engineering Works. Indiana commences fabrication of steel grills and gratings.

About us

Indiana was incorporated in the year 1970 as a grating fabricator and is today recognized as a diversified group. Indiana's business verticals are fabricated structural steel, steel bridges, gratings, handrails, cable management systems and bulk material management systems.

Indiana serves its worldwide customers through its state-of-the-art fabrication facilities that implement world-class processes and practices.

Indiana is a customer-centric group and has experience of decades working with leading owners, consultants and contractors worldwide.

Indiana exports to various parts of the world which include (but not limited to) the Middle East, South East Asia, the Americas, Australia and Europe.

Indiana has executed projects for various international companies (but not limited to) like Bechtel, Fluor, Saipem, CB&I, Petrofac, Technip, Foster & Wheeler, Tecnicas Reunidas, J Ray McDermott and NPCC. It has also executed projects for Indian companies such as NTPC, BHEL, Reliance, ONGC, L&T, Thermax, BGR Energy, Essar, Adani and TATA groups.



INDIANA HOUSE, MUMBAI

CSR



Making Corporate Social Responsibility,
Every Individual's Social Responsibility

Corporate Social Responsibility



Corporate philosophy

Vision

Indiana will be a world class structural steel fabricator preferred by suppliers in our industry for projects around the globe while creating value for all our stakeholders.

Mission

To conduct business in a healthy working environment with the highest ethics and integrity while adhering to international safety regulations while focusing on customer delight by ensuring timely delivery of high quality products.

Values

To realize our vision and mission, we rely upon our corporate values that are sacrosanct. We will work with these values without any compromises.

- Team Work
- Will do attitude
- Customer first orientation
- Integrity and ethics
- Corporate Responsibility
- Continuous Improvement

Aerial view of Fabrication facilities at Jejuri, Pune



Fabrication facilities

Five fabrication facilities and one galvanizing plant at MIDC, Jejuri near Pune, India.

Covered Area	72,000 square meters	7,75,000 square feet
Open Area	57,000 square meters	6,13,543 square feet
Total Area	129,000 square meters	1,388,540 square feet
Expansion Area	50,000 square meters	538,196 square feet

Total No Of EOT Cranes - 72



QHSE certificates



ISO 9001 : 2015



ISO 14001 : 2004



ISO 18001 : 2007

QHSE

We at **Indiana** are committed to maintaining the highest levels of quality, health, safety and environment in our business practices and operations and aim to be considered as a leader in QHSE performance in our industry.

A key element in the area of social responsibility is our commitment to conduct business in a manner that protects the natural and social environment, maintain a continual safety program for the workplace and promote sound occupational health standards among our employees. We are committed to operate our business with the health and safety of our employees and surrounding community as well protection of our environment as our key priority.

The management of Indiana sets objectives and targets for QHSE and regularly monitors how these are achieved. The management is also responsible for ensuring that the Occupational Health Safety and Environment management system of the organization complies with rules and regulations, as per Indiana's QHSE policy, directives of OHSAS 18001 and ISO 14001 standards.

Because of Indiana's footprint in various parts of the world, it continues to learn and adapt world class QHSE policies and continues to adhere to international norms. We do this by creating awareness about quality, health and safety issues; ensuring our personnel are well-informed and up-to-date on care and protection methods as well as risk management options.

Our QHSE department ensures that all inspections and audits are carried out regularly and in accordance with the strictest requirements. The department also ensures that tools, tackles and equipment are regularly tested by relevant agencies.

We ensure all staff undergo safety inductions and job specific training to avoid personal injury and occupational hazard.





Fabricated steel gantry

Fabricated steel structures

Indiana continues to be an early mover into new verticals and anticipating the growing demand for shop fabricated structural steel over site fabricated structural steel, **Indiana** set up a state of the art fabrication facility in Jejuri, near Pune.

The advantages of shop fabrication over site fabrication are excellent welding quality, dimensional

accuracy, faster delivery in volumes and long lasting paint finish.

In our endeavor to establish a world class facility, **Indiana** has a series of machines imported from USA which includes band saw machines, plate processors and beam drilling machines.

Indiana fabricates two types of structural steel sections:

- 1. HOT-ROLLED SECTIONS (products fabricated from rolled sections)**
- 2. BUILT-UP SECTIONS (products fabricated from steel plates)**





Fabricated hot-rolled structures

Fabricated steel structures

Hot-Rolled sections

Our shop for the hot rolled beams is well equipped with state of the art fully automatic CNC machines imported from Peddinghaus USA to process all types of materials sections like beams, plates, channels, and angles.

The machines are connected with LAN through which nested numerical codes are being transferred from nesting software computers. Our planning team are provided with SDS Shop Data , PEDDIMAT, PEDDINEST, NIRVANA and COLUMBUS software which imports NC1, DSTV, DXF files which contains the data/dimension extracted from CAD software such as

and TEKLA (X-STEEL), SDS/2, STRUCAD and converts it into machine compatible nesting programs for the machines.

The entire operation of marking, cutting and drilling is CNC operated in accordance with nesting files without any manual interference in the operation cycle eliminating any room for manual error. Production efficiency and production quality both are controlled by the machines.





Fabricated built-up structures

Fabricated steel structures

Built-up sections

The Built-up beam section bays are equipped with submerged arc welding line with conveyor system for the manufacturing of various types of beams such as "H", "T", "I", BOX and PLUS type.

The fabrication facility is installed with state-of-the-art material handling system with cross bay trolleys, using hydraulic and electrical operated roller conveyors and 18 EOT

cranes with maximum SWL capacity of 40 Metric tonnes to handle the structural steel safely and efficiently. Indiana has fabricated maximum built up structure of 2m height x 1m width x 18m length.





**Steel bridge
structures**

Steel bridge

Steel bridges are an essential feature of a country's infrastructure and landscape. The Girders - (Plate and open Web Girders) are widely used around the world for the construction of bridges due to their various advantages which include improvement in efficiency of installation and providing sustainable solutions. Indiana had foreseen this market demand in India and commenced the fabrication of Steel Girders.

Indiana caters to the demands for long span bridges, railway bridges, footbridges and medium span highway bridges.

Indiana fabricates two types of Girders:

1. **Plate Girders**
2. **Open Web Girders**





**Otjikoto project
- Lycopodium**

Gratings

Indiana is one of the largest electroforged grating fabricators in the world and has capacity to produce over 250 MT of grating panels per day using its seven ultra modern lines and maintain a stock of grating panels ready to be dispatched on short notice.

The grating panels are available in standard sizes and meshes that are preferred by the clients worldwide.

Indiana supplies electroforged grating panels, cut-to-size or custom fabricated electroforged gratings, circular gratings, heavy duty gully gratings and stair treads with required fixing clamps in Mild Steel and Stainless Steel. These gratings can be supplied in self-colour, hot dip galvanized and painted surface finish.





DANGER
KEEP HANDS AWAY FROM MOVING PARTS

**Modular
handrails**

Handrails

Indiana offer a cost-effective Ready-Fix Handrails system that are widely used to guard platforms, stairways, walkways, towers, danger zones and other areas where safety is of prime concern.

These modular systems are preferred not only because they help save time during installation and labour costs but also because they help ensure maximum safety by avoiding welding at site and control on wastage.

Indiana's Ready fix handrail systems offer a complete package consisting of standard and customized handrails. The package is delivered with necessary bends and joints duly marked to ensure quick and easy installation.

Indiana's handrail systems are available in Mild Steel and Stainless Steel with standard finish such as self colour, painted, galvanized and powder coated.





Cable management system

Cable management system

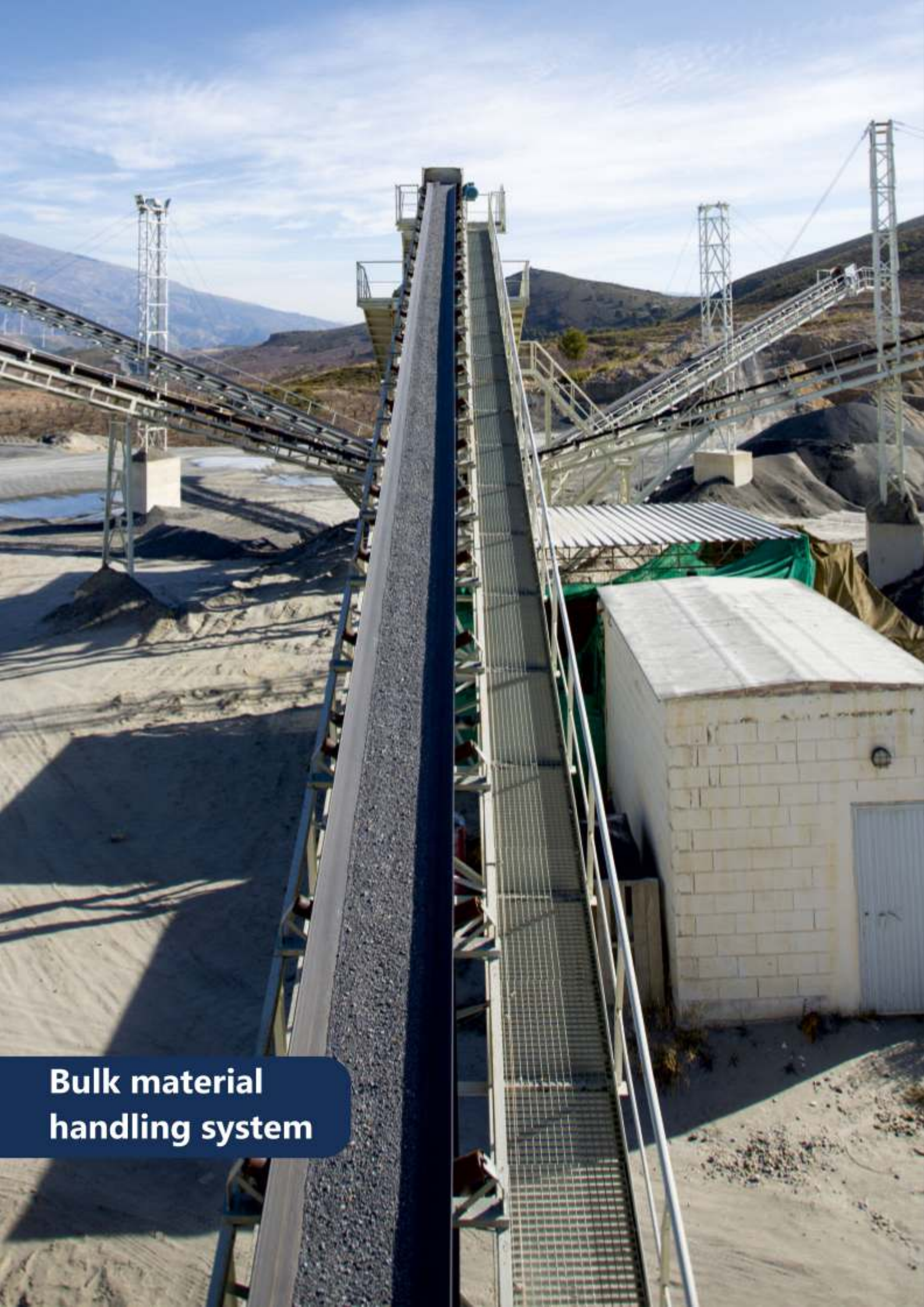
Indiana is one of leading fabricators of cable management systems. Indiana supplies embossed perforated cable trays, plain cable trays and ladder trays in Mild steel, Stainless Steel and Aluminium.

Cable trays are available in different sizes as per the clients standard requirements of and up to 6 metres (20 feet) length. Indiana also supplies wiremesh trays using wire rods with diameter up to 6 mm.

Accessories are available for perforated as well as ladder type cable trays such as horizontal bends, vertical bends, inside bends, outside bends, reducers and tees. Indiana also supplies raceways, trunkings, cable tray support system which includes strut channels, threaded rods, structural sections, cantilever arms, hardware etc.

Cable trays are available in different finishes like self-colour, pre-galvanized, hot dip galvanized, powder coated, painted and electro-polished.





**Bulk material
handling system**

Bulk material handling system

Indiana is a reliable and quality provider of bulk material handling equipment and services catering to the demanding and challenging needs of clients worldwide. With nearly four decades of experience, Indiana designs material handling systems as per customized needs of its different clients and also executed projects on an EPC basis.

The systems are of various types such as belt conveyors, screw conveyors, feeders, bucket elevators, slat conveyors, chain conveyors, roller conveyors, bag filters, rotary feeders, airlock valves, bin activators, air slides, jaw crushers, hammer mills, impact crusher, vibrating screens, reciprocating feeders and consists of several components.



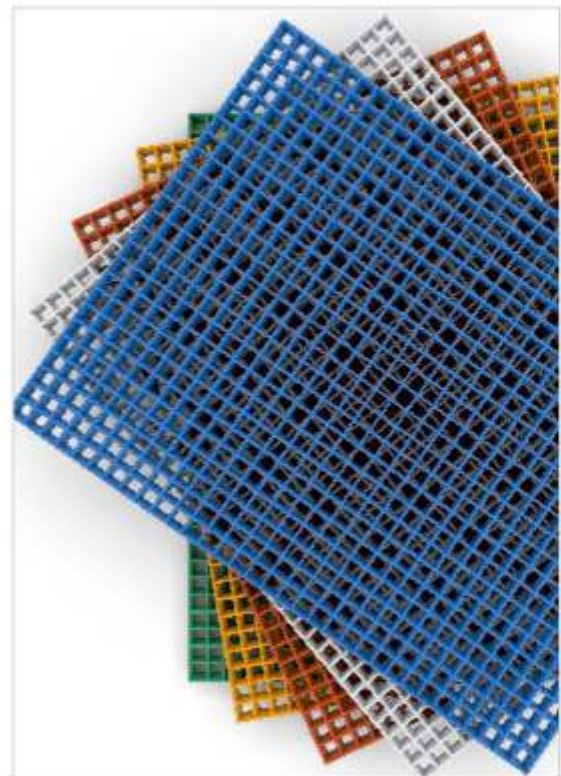
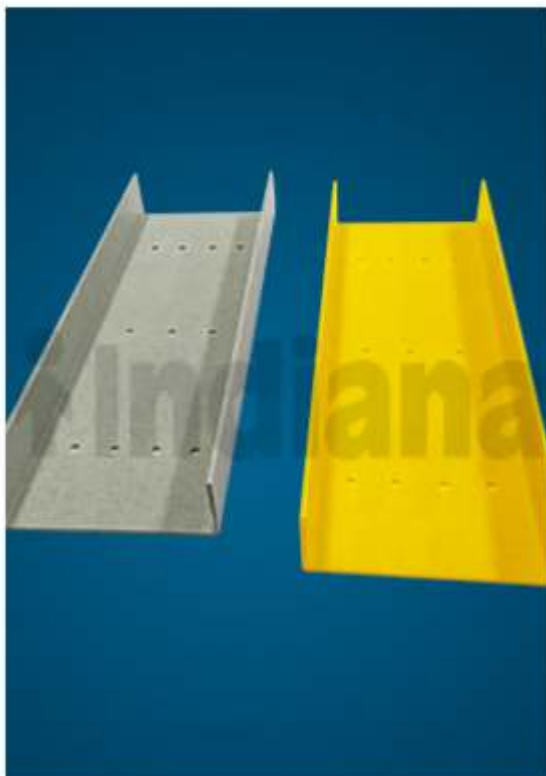


GRP / FRP products

GRP / FRP products

Indiana produces GRP / FRP (Glassfibre reinforced plastic / Fibreglass reinforced plastic) gratings, cable trays, sections and customized designs for industrial use. GRP / FRP products are lightweight and can be cut to size as per the client's specifications and can also be installed quickly using standard working tools.

GRP / FRP products are produced from different types of resin as per the requirement for the application which is reinforced with glass fibres. Advantages of GRP / FRP products include fire retardant, corrosion resistance, non-conductive, aesthetic appearance, ultra-violet protection and high strength to weight ratio.





Galvanizing plant

Hot dip galvanizing

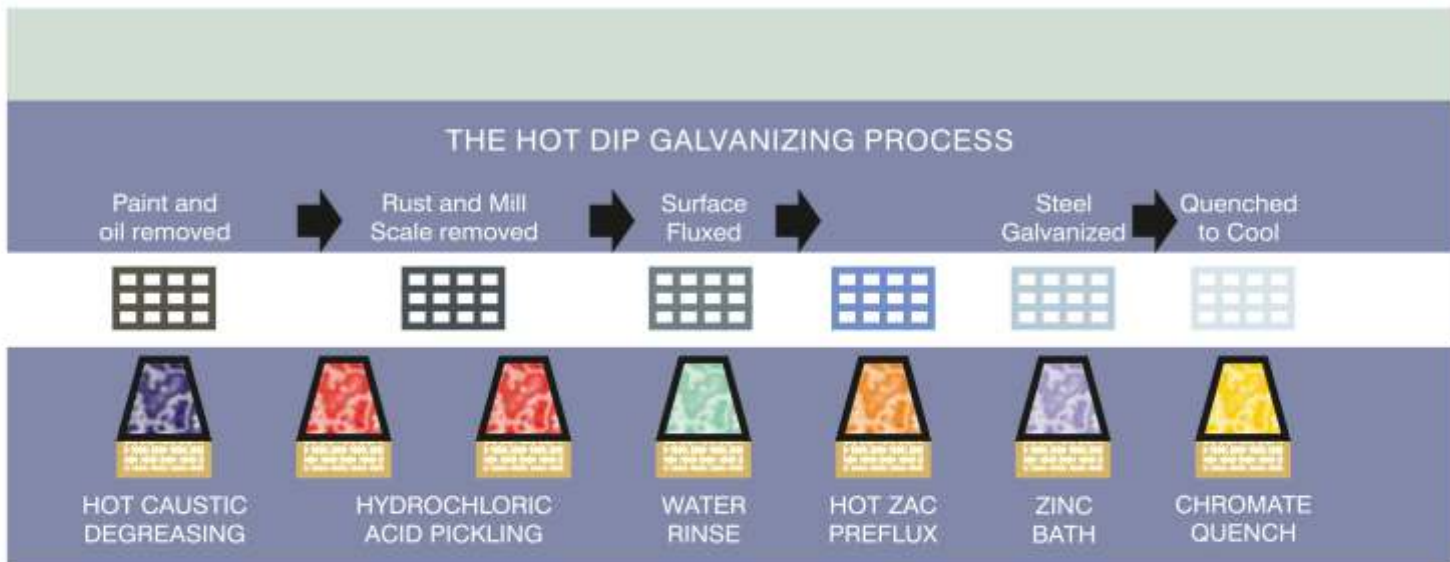
Indiana has its own state-of-the-art Hot Dip Galvanizing facility which has been imported from Europe.

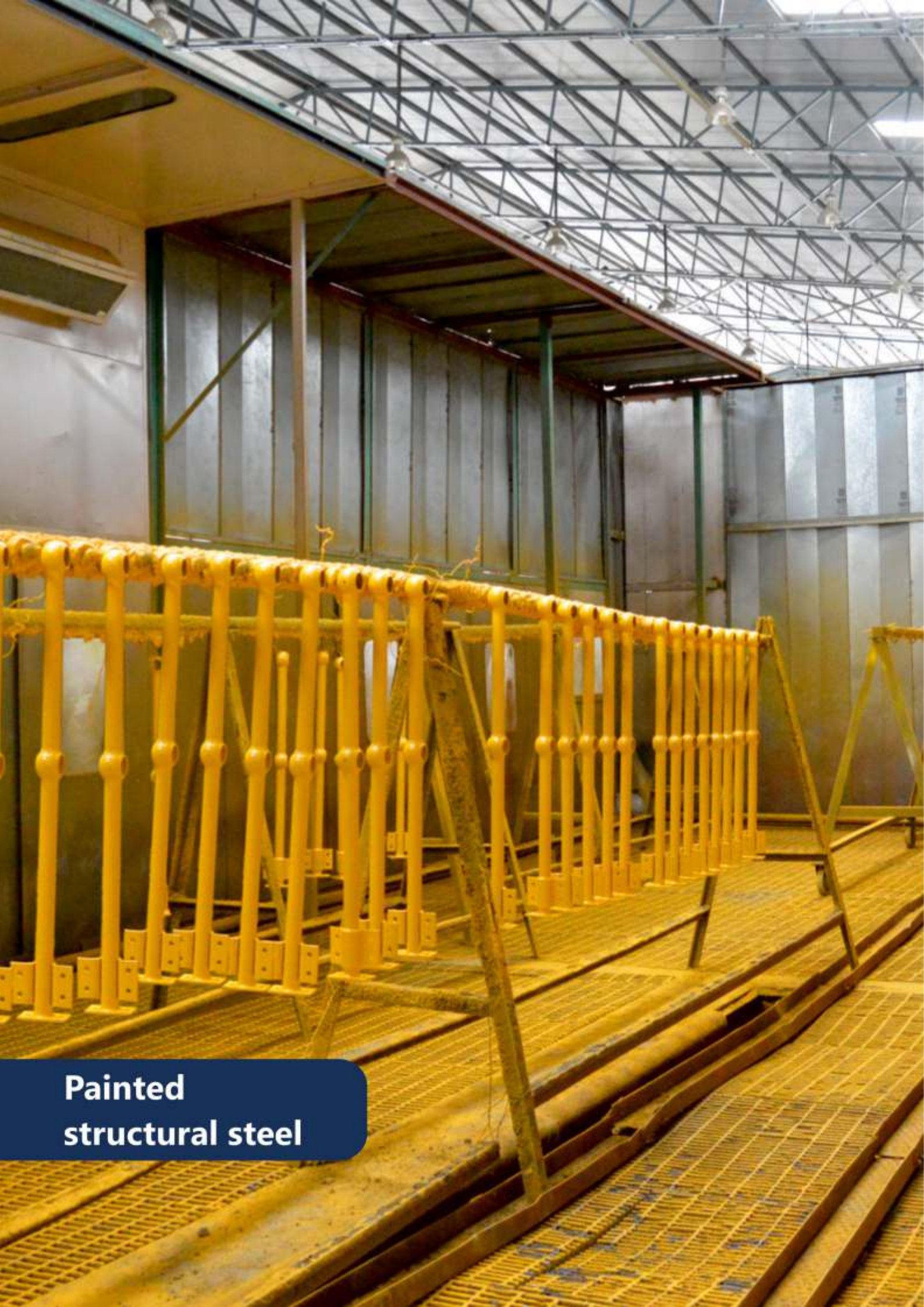
The dimension of Zinc bath is 8 meters long X 1.2 meters wide X 2.5 meters deep. The proven capacity of the Plant is 30,000 MT per year. The galvanizing furnace is equipped with pulse fire burners which are controlled by a PLC system. Indiana follows a seven tank processes and follows all the guidelines of the Pollution Control Board.

The galvanizing facility is equipped with Zinc and Acid fumes extraction systems, Effluent Treatment Plant for waste acid and rinsing water which helps in eliminating air pollution.

Galvanizing is performed in accordance with following standard:

- Indian standard : IS 2629
- American standard : ASTM A123
- British standard : EN ISO 1461:1999
- German Standard : DIN 50976
- AS/NZS : 4680:2006





**Painted
structural steel**

Shot blasting and Painting

Indiana also has a state-of-the-art shot blasting and painting facility for heavy, medium and light steel products which has been imported from abroad. It meets with international and Indian standards. All our shot-blasting and painting techniques are environment-friendly.

At Indiana, both machine and manual blasting facilities are available and are covered under shade area which also includes the painting booth. The estimated painting capacity at Indiana is 2500MT per month. Indiana's automated blasting machine caters for maximum beam size - 1900mm height, maximum plate width - 850mm, maximum length - 16000mm. The

various coating materials used for blasting process are zinc, epoxy, polyurethane, vinyl esters and enamels. Indiana has well equipped sheds of painting booth of 16m width X 80m long and 20m width X 132m long respectively. Indiana has special airless spray painting facilities which are capable of applying thick coatings at high speed. The high transfer efficiency helps us save considerable amount of material, thereby lowering the cost and covers larger areas in minimal time. Indiana can provide paint thickness of 10-15 μm , 15-20 μm and 25-40 μm per coatings as per clients specification. The airless sprayers can apply high-viscosity materials without thinning and can cover irregular surfaces.





Ladder tray galvanizing

Clients

Some key clients of Indiana are shown below:





Indiana Gratings Private Limited

Indiana House, Marol Naka,
P. B. No. 7409, Andheri (East),
Mumbai - 400 059

Tel: +91(22)-2850 4743, 2850 5611

Fax: +91(22)-2850 5154

E-mail: sales@indianagroup.com

Baroda | Chennai | Delhi | Hyderabad | Kolkata | Pune